



PREAMBLE	02
OVERVIEW	03
STRUCTURAL FABRICATION	05
GENERAL FABRICATION	07
PLANT AND MACHINERY	09
VISION & QUALITY ASSURANCE	11
ORGANIZATION CHART	12
LEGAL DOCUMENTATION	13
LOCATION MAP	14



Specialist Resources is a manufacturing service provider in research, power generation, manufacturing, defense and oil & gas industries since 1998. Established in India as a design, manufacturing and project Management Company, and then developed an international capability in Dubai on 2003 incorporating the fabrication service. Steel fabrication facility in Kingdom established in Jubail on 2012 to add specialized structural & piping fabrication service on company profile.

Truly solution orientated we are able to provide a number of cost effective internationally compliant applications to meet even the most challenging requirements of our clients. We have extensive experience in initiation, realization and sustain of multitasking projects for offshore and on shore construction market. Additionally supported by our extensive manpower, specialized welder training fleet we can ensure that even the most stringent of project timelines can be accommodated.

Our service concept also extends to our project management and auditing services ensuring that we can provide highly economical internationally accepted engineering services that enhance our client service provision. Supported by detailed engineering and reliability centered maintenance analysis capability we are able to provide a valuable technical resource in developing customized engineering services to ensure operational excellence in even the most remote and harsh environments.

Our core strength comes from the diverse backgrounds and experience of our staff. Over the last 15 years Specialist Resources has developed into a highly resourced responsive company with international facilities. From our corporate head office in India and fabrication facilities in Dubai and Saudi we are able to support our client requirement worldwide.

Integral to SRW's operations is its fabrication capabilities. From simple tool trolleys to complex structures / assemblies, components can be fabricated in a variety of materials. Our highly skilled engineers and technicians are also able to assist with tailor-made solution for complicated components. With over 15 years' experience in industry, SRW can proudly guarantee the best possible levels of quality and workmanship. The combination of expert design, manufacture, installation and commissioning skills ensures SRW is able to meet the special requirements of our customers.

SRW Fabrication - Our Capabilities

SRW's fabrication capabilities allow us to provide services for a wide range of industrial needs. Our experience in house fabrication includes, but is not limited to, industrial structures, supports & beams, industrial pipe racks, handrails, ladders, gratings, pipelines and Piping Fabrication. Our expertise in fabrication of carbon steel, stainless steel and alloy steel materials in a variety of pipelines and pipe work from the major projects provide a significant complimentary contribution to our activities.

Specialized Welding Services

SRW specialized welding services are code compliant.

At SRW, our QC inspectors and supervisors have a welding background and have been through our rigorous QC training program. This program consists of Visual Examination, Weld Inspection Technology, ASME Sect. IX, Document Control, Liquid Penetrant Testing, and Communication. Our quality standards



are among the highest in the industry, with Welder Certification maintained by an electronic Welder Management System.

Welding Specifications

- B31.3
- D1.1
- API 1104
- ABS
- DNV

Welding Procedures

- GTAW
- FCAW
- SMAW
- GMAW

Welding Metals

- Carbon Steel
- Stainless Steel
- Structural Steel
- Mild Steel
- Duplexes
- Alloy 20
- Titanium

Welders Qualifications

- ASME IX

- BS EN 287 PT 1
- BS 4515

SRW Structural Fabrication - Our Capabilities

Specialist Resources Works is equipped to deliver the structural fabrication that your application demands, while meeting the design and testing specifications your project requires. Structural fabrication usually involves heavy metals and most commonly structural steel.

Structural Fab line consists of 3 stations (a) Beam station (b) Plate station (c) Assembly station. Beam Station accurately cuts the beam section at the required length and drill holes by magnetic drilling machine. Plate station produces all the end plates, gusset plates and cleats using PUK cutting, shear and angle cropping machines. Assembly section, the end plates, gusset plates, cleats etc are tack welded and inspected by qualified/certified inspectors for the accuracy of the fit up. Then the job moves to qualified welders using FCAW welding machines.

SRW use structural steel members such as I-beam, UC-beam, angle, channel, flat bar, square, rectangular, and round tubing to fabricate:

- Platforms
- Structural beams
- Pipe line skids
- Stairs
- Skid chassis
- And a countless variety of other applications



Structural fabrication works using HR sections or Built ups from plates are also undertaken.

SRW have the capabilities to custom fabricate to almost any requirements a customer may have. Also offer structural fabrication to the customer's requirements, so the degree of strength and reinforcement is based upon your needs and specifications.



All welding is carried out according to qualified and approved procedure specifications, and checked by 100% visual and Dye Penetrant inspection if required.

SRW continuously researches new development in technology to offer the most cost effective solutions to your structural fabrication. We are deadline driven and our expertise is quick turnarounds.

SRW General Fabrication - Our Capabilities

SRW offer light weight metal fabrication services under general fabrication. We are equipped to deliver variety of handrail, ladder, grating and stringer fabrication services that your application demands.

Structural Fab line consists of 4 stations (a) Chopping station (b) Plate station (c) Assembly station (d) Welding station. Chopping station accurately cuts and notches the angle / pipes at the required length. Plate station produces all the bottom and end plates, flat bars by gas cutter, magnetic drilling machine and cut off machines. Assembly section, top rails, post and mid rails, the bottom plates, the end plates, kick plates, cleats etc... are tack welded and inspected by qualified/certified inspectors for the accuracy of the fit up. Then the job moves to welding section to qualified welders using ARC / FCAW welding machines.



SRW also offer checkered plate and common plate fabrication services to the customer's requirements.

Our general fabrication service presents a cost-effective, high-quality option for your company. We are happy to work with you to achieve the best result.

SRW's dedication to quality extends not only to our products, but also to the services we are able to offer. Each of our engineers is highly skilled and vastly experienced by the regular rigorous training and many years of expertise. This ensures that we are able to consistently surpass customer's expectations both on time and on budget.

Weld Technology Review

SRW providing a complete range of problem solving and solutions-oriented production support services that include:

- Retained Welding Engineering and technical design expertise for all structures, pressurized vessels & piping, and storage tanks;
- welding procedure design and qualification support for new and in-service structures and components;
- welding procedure specification development and review for common and difficult to weld materials;
- welder training;

Productivity Enhancement



In order to keep a competitive edge, companies must continually seek ways to reduce fabrication costs, increase production, and improve product quality and workplace safety.

SRW offers productivity enhancement services to industry through fabrication auditing, and strategic streamlining & optimization of assembly

operations. With combined expertise and knowledge in welding technology, engineering, and metallurgy, SRW provides overall production support to help your company meet its goals.

At SRW, productivity enhancement service is accomplished by:

- improved production flow through evaluation of fabrication sequences;
- reduced welding operations and improved fatigue life through component and welded connection design assessments;
- increased welding stability and production rates through implementation of advanced welding equipment and optimization of parameters and/or programs;
- reduced "downtime" through implementation of strategic consumable and gas delivery systems;
- improved quality and consistency through automation and jig & fixture design;
- reduced re-work and scrap rates through custom welder training;
- validation of quality through advanced Non-destructive Evaluation (NDE) processes and procedures;
- reduction in "man hours lost" by increasing work place safety.

The labor factor in industry makes up approximately 90% of overall manufacturing costs, the rest being equipment/consumable and overhead expenses. Contact SR to schedule a productivity consultation session, and let us show you how to reduce your manufacturing costs and improve component quality and integrity.

1.0AREA

Covered fabrication Area: 550 M2

Open storage Area: 350 M2

2.0MAN POWER

Total Man Power: 22

Welders – 6 (Multi – 3, Arc -1 & FCAW-2, TUV certified–2)

Fabricators – 8 (Structural – 6, Pipe-2)

Helpers–4

Office staff–4 (Engg.–2, Diploma Engr. –1)

3.0EQUIPMENT & MACHINERY

3.01 Welding Machine – Miller Mark- VIII-2 (Multi welding platform for 8 stations with 80% duty cycle, these power source compatible to TIG, MIG, FCAW, STICK & ARC up to 370A)

3.02 Oxy acetylene profile cutting machine up to 50 mm thk plate

3.03 Hand cutting nozzles (2 set)

3.04 Cut off machine (Bosch) – 2

3.05 Cut off machine heavy duty (Makita) – 2

3.06 Notching station for hand rails – 1

3.07 Chopping station for hand rails – 1

3.08 Magnetic drilling machine up to 50mm bore dia – 2

3.09 Pedestal drill – 1

3.10 Rolling machine – 1

3.11 Bending machine – 1

3.12 Pipe bending machine – 1

3.13 Grinding machines – 20

3.14 Power jack trolley 2.0 ton – 1

3.15 Fork lift Hyster 3.0 ton – 1

4.0PRODUCTION CAPACITY

Sl. No.	Description of Categories	Projected Capacity
1	Fabrication of Heavy structure (Beam, column etc...)	195 MT / Month
2	Fabrication of Medium structure (support, platform, stringer etc...)	135 MT / Month

Vision

- ✓ Commitment to People
- ✓ Striving for Excellence
- ✓ Dedication to Customer

Quality Assurance



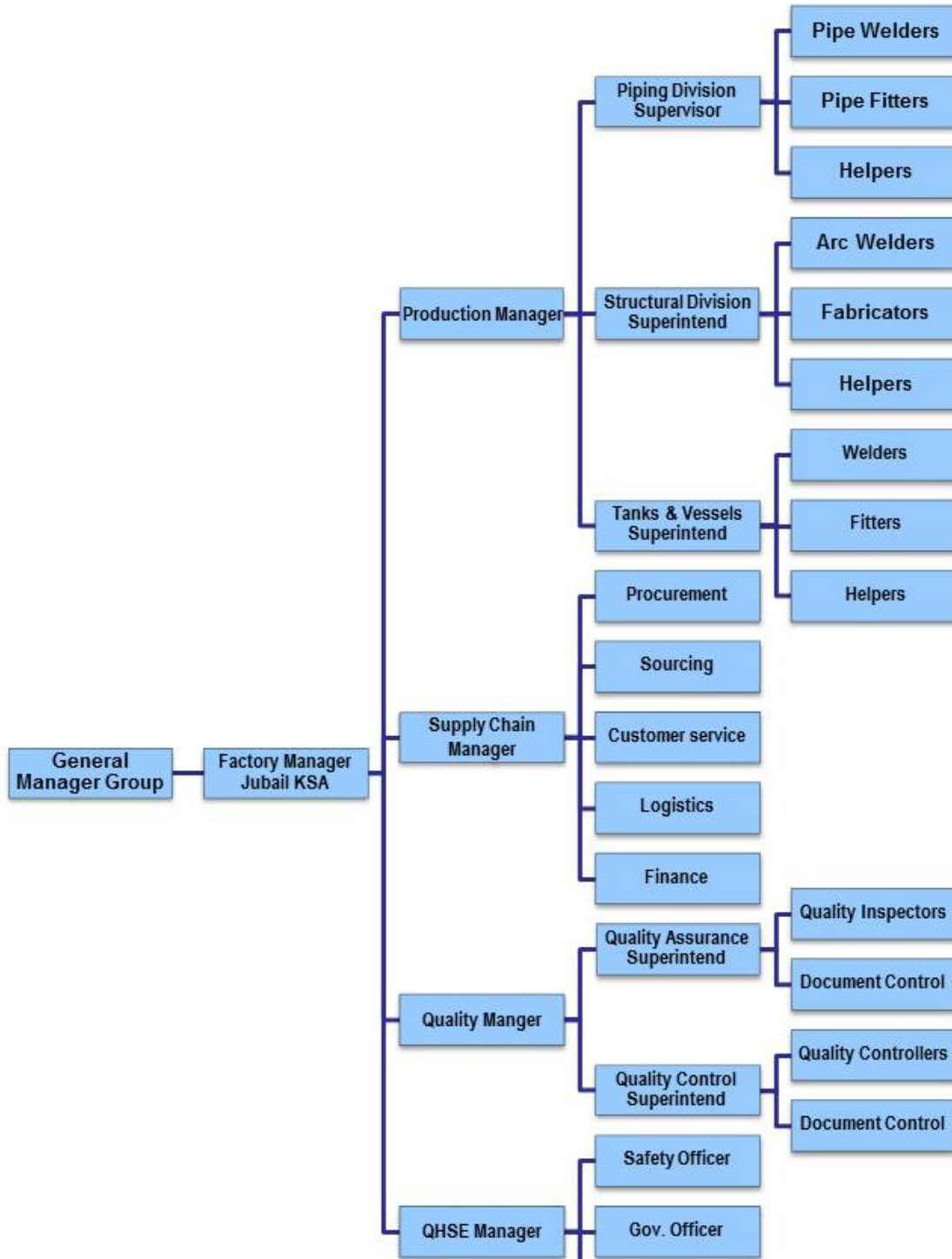
In respect to the Quality Management matters the Management Representative (MR) has the responsibility and delegated authority of the Executive management to take all measures that are deemed necessary to implement and achieve the

quality policy goals. The quality representative shall report regularly to the Executive Management on achievements or areas of constraints and shall identify the adequacy of resources, both human and material so that the requirements can be fully effected.

SR's management and operation processes are continuously measured against internationally respected third party bench marking quality standards. The company's services are designed and performed in accordance with the applicable codes, standards and certifications. For each of the company's projects, a detailed quality plan or inspection and test plan specifies every operational, non-operational, inspection and testing activity. The inspection and

inspection and ultrasonic testing.

Management Network Specialist Resources



COMMERCIAL REGISTRATION

المملكة العربية السعودية
وزارة التجارة والصناعة

شهادة تسجيل فرع مؤسسة

الرقم: ٢٥٥٠٢١٢٥٥ التاريخ: ١٤٣٥٩٠٢٩١٦

اسم التاجر (رباعياً) صغير بن سالم بن صياد النجاصي
رقم السجل المدني / بطاقة الأحوال: ٠٠١٠٢٢١٧٣٢٠٢ تاريخه: ١٤٠١١١١٠٣ مصدره: نجران
المركز الرئيسي: الظهران \ حي النريوة - شارع ابن بطوطة النجاري
من ب: الرمز البريدي: هاتف ٨٦٨٢٤٤٩ توكس: فاكس:

رقم سجل المركز الرئيسي: ٠٠١٢٧٢ تاريخه: ١٤٢٨٠٨١١٢ مصدره: الظهران
الاسم التجاري للفرع: ورشة \ اخصائي الموارد للحدادة
العنوان: الجبيل \ حي \ الصناعات الخفيفة
من ب: الرمز البريدي: هاتف ٣١٩٤١ فاكس: ٤٤٦٨٥٠ توكس: فاكس:

النشاط: اعمال الحدادة والاختنوم

رأس المال: ١٠٠٠٠٠٠٠ (مئة الف ريال سعودي)
اسم المدير (رباعياً) صغير بن سالم بن صياد النجاصي الجنسية: سعودي تاريخ الميلاد: ١٣٧٨
رقم السجل المدني / بطاقة الأحوال: ٠٠١٠٢٢١٧٣٢٠٢ تاريخه: ١٤٠١١١١٠٣ مصدره: نجران
معلومات المدير: كافة الصلاحيات - إدارة الفرع تاريخه: مصدره:
يشهد مكتب السجل التجاري بمدينة الجبيل بانتم تسجيل فرع هذه المؤسسة بسجل مدينة
وتنتهي صلاحية الشهادة في ١٤٣٧١٠٢٩١٦ بموجب الإصدار رقم ١٣٥٢٣٤٣٨ بتاريخ ١٤٣٥٩٠٢٩١٦
الختم مدير السجل التجاري، الاسم: حسين محمد النجاصي التوقيع:

FACTORY LICENSE

المملكة العربية السعودية
وزارة الشؤون البلدية والقروية
إدارة البلديات والترسيمات
إدارة الترخيص

رخصة محل

تجديد : اليوم الوطني السعودي ٨٢ (١٤٣٥٩٠٢٩١٦)

محل الترخيص: ٨٠٠
نوع الحركة: سوق الترخيص
رقم الرخصة: ٣٧٧٦٢
مدة صلاحية الرخصة: ثلاث سنوات فقط
النشاط: ورشة حدادة
اسم المحل: فرع / ورشة اخصائي الموارد للحدادة
اسم صاحب الرخصة: فوزين عايض بن عميش النجاصي
رقم الهوية: ١٠٢٢٧٣١٨٦
العنوان: حي صناعات البثنية
قر المحلة (١٥٣ / ٧) رقم المنطقة (١٨٢)
اسم ملك المقتر: بلدية محافظة الجبيل
رقم الإصدار: ٤٦/١٦٥٨٥٧٥
رقم السجل التجاري: ٢٠٥٥٠١٨٣٩١
رقم تصريح وزارة: ()
إشراك مكتب العمل:
اسم صاحب الرخصة السابقة: عيسى ابن عواد ابن رشيد الشمري
النشاط السابق: ورشة حدادة

تاريخ الترخيص: ١٤٣٢-١٠-٢٨ هـ
تاريخ الإصدار: ١٤٣٤-٠٣-٠٨ هـ
تاريخ الإنهاء: ١٤٣٧-٠٣-٠٧ هـ
الرمز: (٨٠٦٠)

الجنسية: سعودي
تاريخ الإصدار: ١٤١٩-٠١-٢٤ هـ المصدر: الجبيل
النشاط: الصناعات الخفيفة
شارع: شارع عرض ٣٠
اسم المكتب العقاري الوسيط: بلدية محافظة الجبيل
التاريخ: ١٤٣٤-٠٨-٠٩ هـ المبلغ: ١٥٧٠ ريال
التاريخ: ١٤٣٤-٠٣-٠٧ هـ المصدر: الجبيل
التاريخ: هـ المصدر:
التاريخ: هـ

رقم الهوية: ١٠١٠٢٤٣٥٥
تاريخ التغيير: ١٤٣٤-٠٨-٠٩ هـ

مساحة المحل: (٢٠٣٧٠)
مقاس التوحة: (٥ م)
المدخل: فيصل بن خالد العفدي

رئيس بلدية محافظة الجبيل
مدير إدارة الترخيص
رئيس قسم الترخيص

The fabrication facility is easy to find, it's on lite industrial area Jubail. Lite industrial area is just side by the main Dammam - Jubail Highway between King Faisal Road Exit and King Abdul Aziz Road Exit, after Saudi Business center and Khonaini Petrol Station 11. Specialist Resources is located just behind the Jubail Harley Davidson dealership line, left hand side after the service station.

